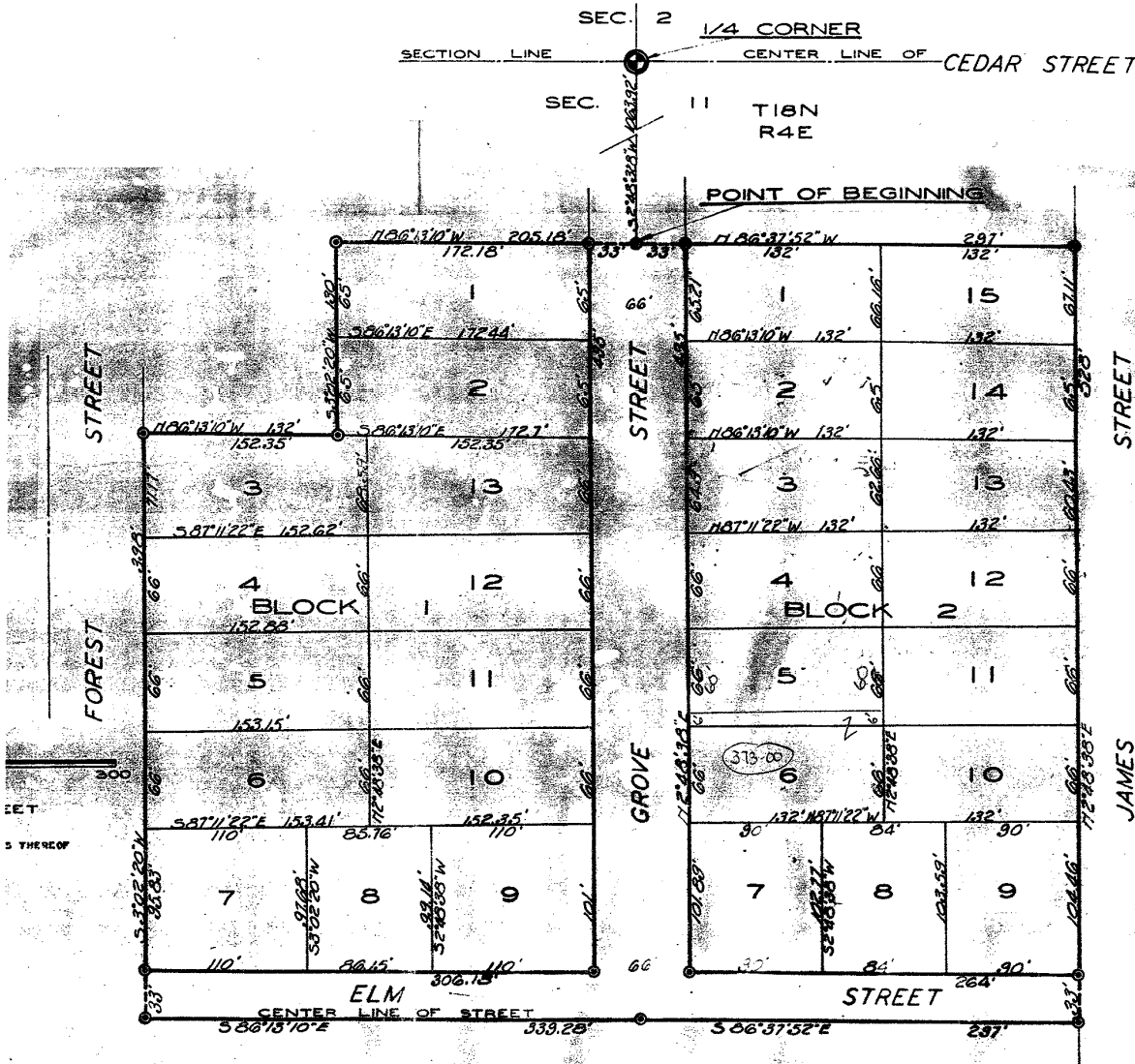


FOREST PARK OF THE CITY OF STANDISH

A SUBDIVISION OF PART OF THE W1/2 OF THE NE1/4
AND PART OF THE E1/2 OF THE NW1/4 OF SECTION 11 T18N R4E

LINCOLN TOWNSHIP ARENAC COUNTY, MICHIGAN.



SURVEY AND PLAT BY -
R. J. Cooke
R. J. COOKE REGIST.
EAST T.