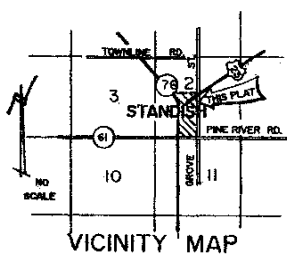


# ASSESSOR'S PLAT OF CITY OF STANDISH NO. 1

A SUBDIVISION OF PART OF THE SE 1/4 OF THE SW 1/4 OF SECTION 2, T. 18 N. R. 4 E.  
LINCOLN TOWNSHIP, ARENAC COUNTY  
MICHIGAN

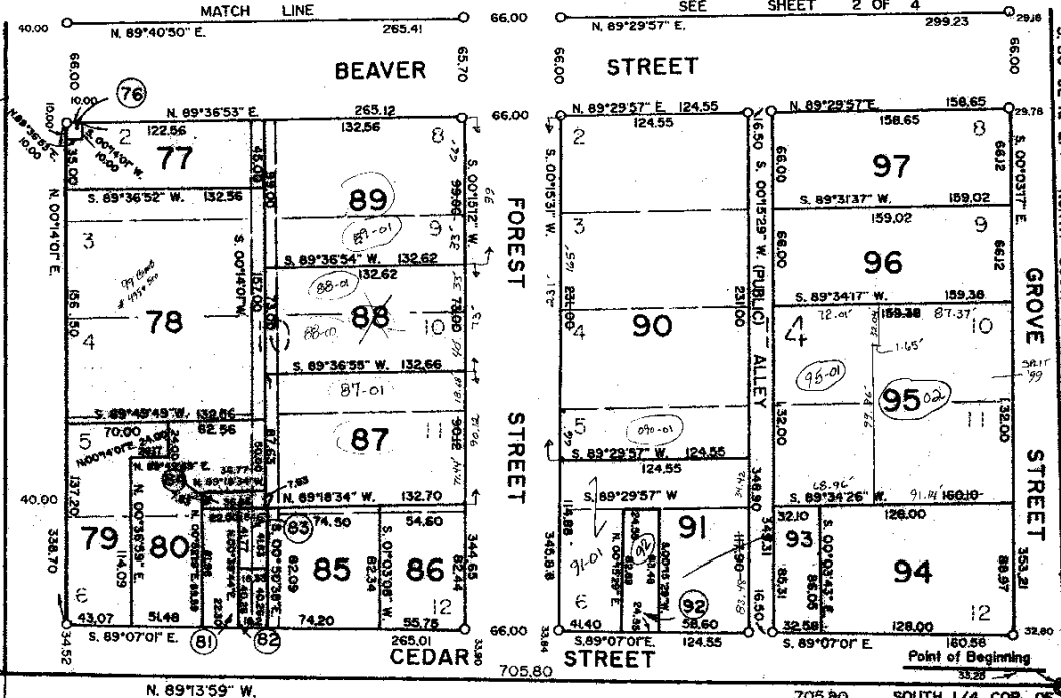
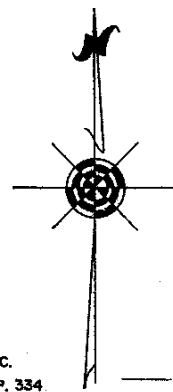
SCALE OF FEET 1" = 60'



VICINITY MAP

MAP OF THE VILLAGE OF GRANTON

HWY. U.S. 23



MAP OF THE VILLAGE OF GRANTON

## MAP OF THE VILLAGE OF GRANTON

IR 1, PAGES 92 & 93, BAY COUNTY RECORDS

### CITY OF STANDISH PUBLIC ALLEYS

CITY OF STANDISH PUBLIC ALLEYS	DPW MAINTENANCE
1. Citizen's Bank Alley From Cedar St. to Beaver St., between Forest St. & Grove St.	FULL MAINTENANCE
2. Small section behind Granton inn	NO MAINTENANCE
3. In Town Inn Motel Alley, Mill St. to River St., between US23 & Forest St.	NO MAINTENANCE <i>VACATED</i>
4. City parking lot(107) between Forest and US23	FULL MAINTENANCE
5. City parking lot(129), corner of Forest & Pine	FULL MAINTENANCE
6. Alley between Court St. & Church St., from M-61 to Pine St.	NO MAINTENANCE <i>VACATED</i>
7. Alley between Court St. & Church St., from Pine St. to Washington St.	NO MAINTENANCE <i>VACATED</i>
8. Alley between Church St. & Front St., from M-61 to Pine St.	NO MAINTENANCE <i>VACATED</i>
9. Alley between Church St. & Front St., from Pine St. to Washington St.	NO MAINTENANCE <i>VACATED</i>
10. Old Hospital Alley, between Church St. & Front St., from M-61 to Beaver St.	FULL MAINTENANCE

depth  
 40 - 50 = .65 F  
 50 - 60 = .70 F  
 60 - 80 = .80 F  
 80 - 100 = .90 F  
 100 - 150 = 1.00 F

*Richard L. Miller*

