

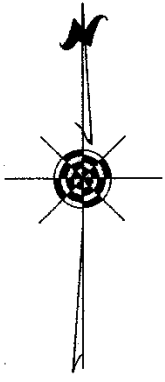
ASSESSOR'S PLAT OF CITY OF STANDISH NO. 1

A SUBDIVISION OF PART OF THE SE 1/4 OF THE SW 1/4 OF SECTION 2, T. 18 N. R. 4 E.
LINCOLN TOWNSHIP, ARENAC COUNTY
MICHIGAN

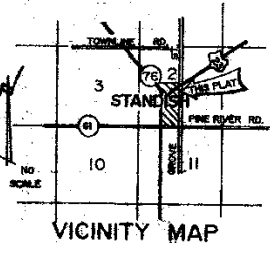
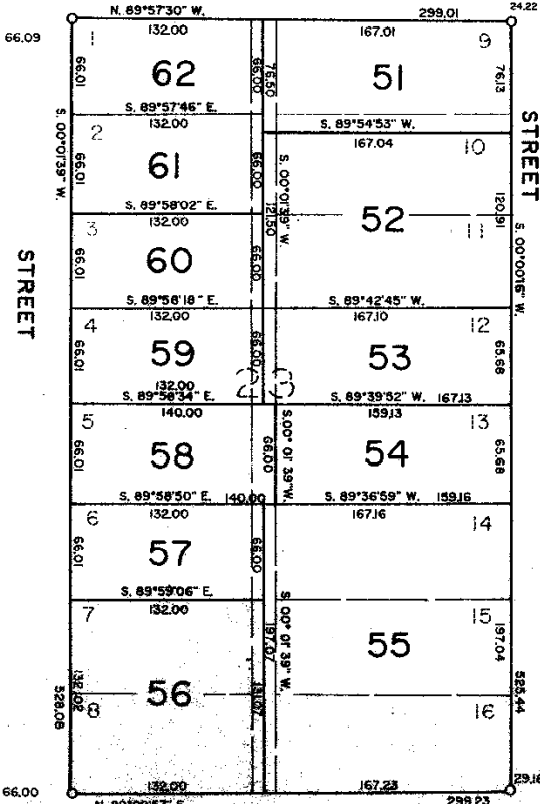
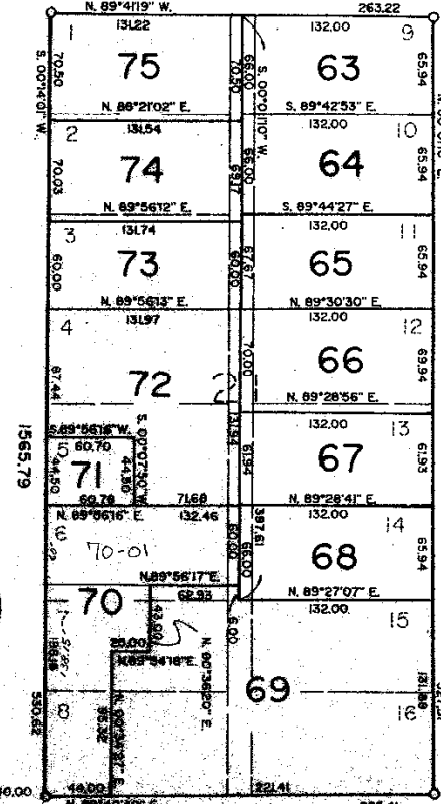
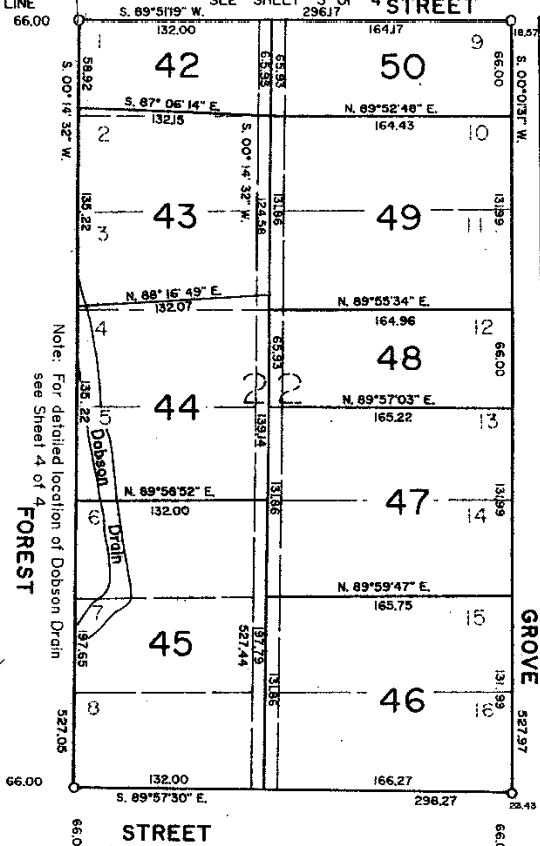
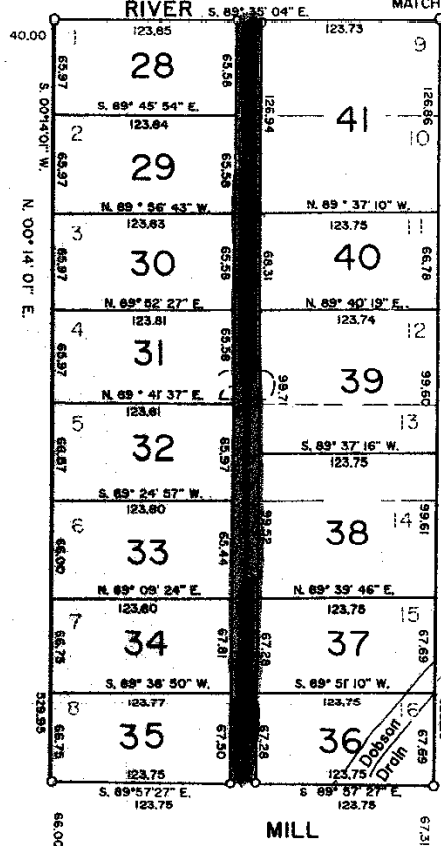
SCALE OF FEET 1" = 60'



RIVER ST.
NOT DEV



MAP OF THE VILLAGE OF GRANTON
LIBER 1 PAGES 928-93 BAY COUNTY RECORDS



PLAT LEGEND

- 1 ALL DIMENSIONS ARE IN FEET.
- 2 CONCRETE MONUMENTS CONSISTING OF A SOLID STEEL ROD, 1/2 INCH IN DIA. AND 36" IN LENGTH AND COMPLETELY ENCASED IN CONCRETE, 4 INCHES IN DIA. HAVE BEEN PLACED AT ALL POINTS MARKED THIS WAY.
- 3 CORNER MONUMENTS CONSISTING OF 3/4" STEEL RODS, AT LEAST 1/2" IN LENGTH DRILLED, GROUTED AND CAPPED IN CEMENT WALKS ARE MARKED THIS WAY.
- 4 LOT CORNERS HAVE BEEN MARKED WITH 3/4" DIAMETER STEEL RODS AT LEAST 18 INCHES IN LENGTH AND SET WITH 5/16" DIA. STEEL WELLS ON "N.E." CORNERS.
- 5 BEARINGS WERE ESTABLISHED FROM PLANS ON FILE OF THE MICHIGAN DEPARTMENT OF TRANSPORTATION FOR HIGHWAY U.S. 73 (FILE NO. 2-2-2 SHEET 137)



Survey and Plat by: *Richard L. Miller*
Registered Land Surveyor No. 16050

UNPLATTED

UNPLATTED

UNPLATTED

MAP OF THE VILLAGE OF GRANTON
LIBER 1 PAGES 92 AND 93 BAY COUNTY RECORDS
262168

BLOCK 24

MATCH LINE SEE SHEET 3 OF 4 STREET

Note: For detailed location of Dobson Drain see Sheet 4 of 4 FOREST

STREET

SEE SHEET 1 OF 4 STREET