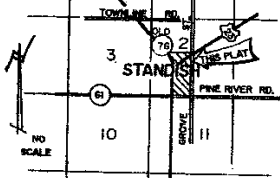


# ASSESSOR'S PLAT OF CITY OF STANDISH NO. 1

A SUBDIVISION OF PART OF THE SE 1/4 OF THE SW 1/4 OF SECTION 2, T. 18 N. R. 4 E.  
LINCOLN TOWNSHIP, ARENAC COUNTY  
MICHIGAN

N. 1/4 COR. SEC. 2  
T. 18 N. R. 4 E.  
L.C.R.C.  
L. I. P. 333

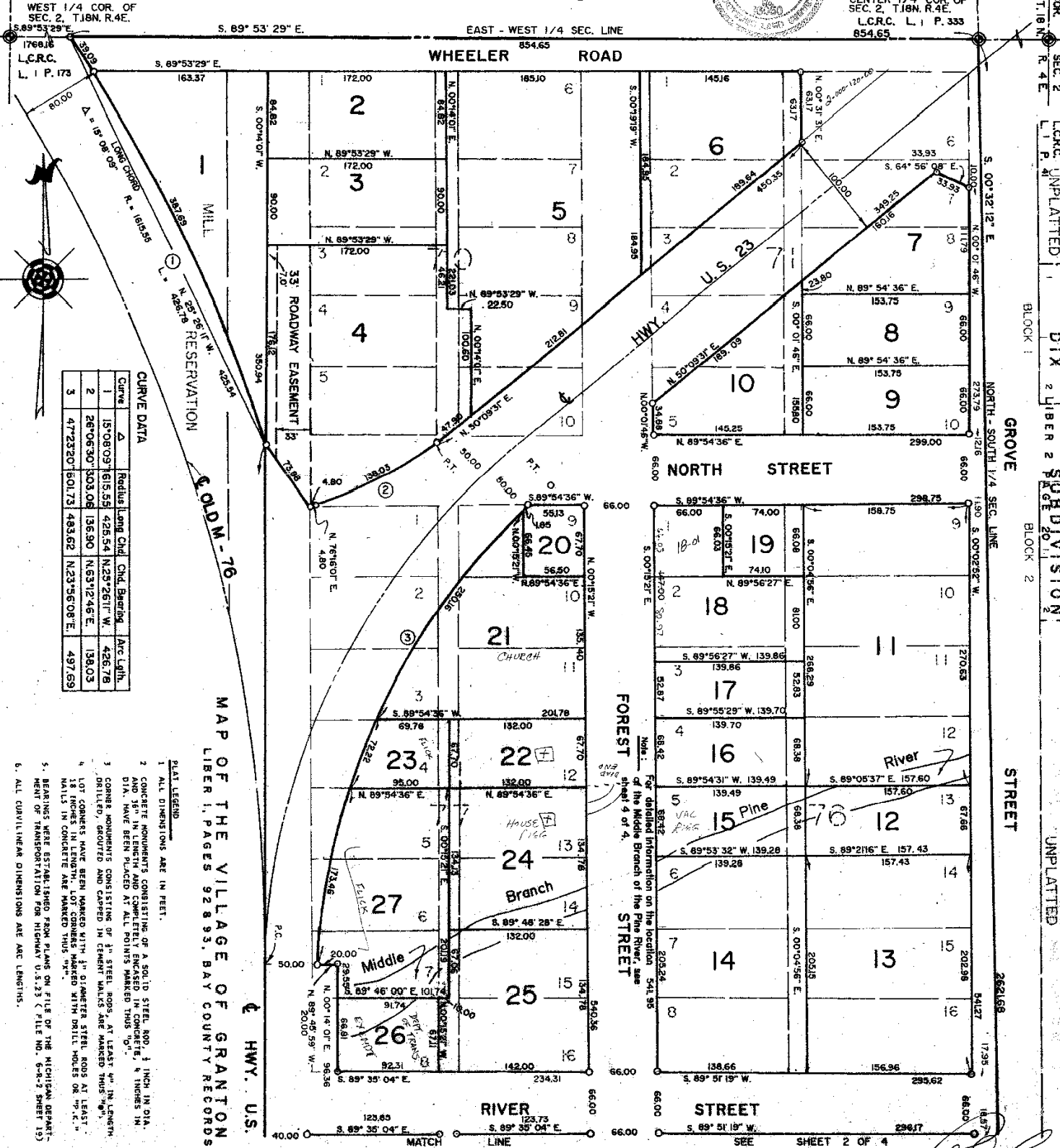


SCALE OF FEET 1" = 60'



UNPLATTED

CENTER 1/4 COR. OF  
SEC. 2, T. 18 N. R. 4 E.  
L.C.R.C. L. I. P. 333  
854.65



E 1/4 COR. SEC. 2 L.C.R.C. UNPLATTED L. I. P. 333  
 T. 18 N. R. 4 E. L.C.R.C. L. I. P. 333  
 BLOCK 1  
 DIX 2 LIBER 2 SUBDIVISION 1  
 PAGE 20  
 BLOCK 2  
 UNPLATTED  
 STREET

CURVE DATA					
Curve	Radius	Long Chd	Chd. Bearing	Arc Length	
1	15708.09	1615.58	425.54 N. 23° 26' 11" W.	426.78	
2	26706.30	303.08	18.90 N. 63° 12' 48" E.	18.03	
3	47723.20	1601.73	483.62 N. 23° 56' 08" E.	497.69	

MAP OF THE VILLAGE OF GRANTON  
LIBER 1, PAGES 92 & 93, BAY COUNTY RECORDS

PLAT LEGEND

- ALL DIMENSIONS ARE IN FEET.
- CONCRETE MONUMENTS CONSISTING OF A SOLID STEEL ROD, 1 INCH IN DIA. AND 36" IN LENGTH AND COMPLETELY ENCASED IN CONCRETE, 12 IN. DIA. HAVE BEEN PLACED AT ALL POINTS MARKED THUS "C".
- CORNER MONUMENTS CONSISTING OF 1" STEEL RODS, AT LEAST 48" IN LENGTH, DRILLED, GROUDED AND CAPPED IN CEMENT WALLS ARE MARKED THUS "M".
- LOT CORNERS HAVE BEEN MARKED WITH 1/2" DIAMETER STEEL RODS AT LEAST 18 INCHES IN LENGTH. LOT CORNERS MARKED WITH DRILL HOLES OR "P.C." NAILS IN CONCRETE ARE MARKED THUS "N".
- BEARINGS WERE ESTABLISHED FROM PLANS ON FILE OF THE MICHIGAN DEPARTMENT OF TRANSPORTATION FOR HIGHWAY U.S. 23 (FILE NO. 6-8-2 SHEET 13)
- ALL CURVILINEAR DIMENSIONS ARE ARC LENGTHS.

Survey and Plat by: *Richard L. Miller*  
Richard L. Miller  
Registered Land Surveyor No. 16050