

# ASSESSOR'S PLAT OF CITY OF STANDISH NO. 2

A SUBDIVISION OF PART OF THE NORTH 1/2 OF SECTION II, T. 18 N. R. 4 E.  
LINCOLN TOWNSHIP, ARENAC COUNTY  
MICHIGAN

ASSESSOR'S PLAT OF  
CITY OF STANDISH NO. 1  
CABINET 2, SUEDES

SCALE OF FEET 1" = 60'

MAP OF THE VILLAGE OF GRANTON

Point of Beginning  
N. 89° 27' 07" W. 362.87'

L.C.R.C.  
L.I. P. 334  
N. 89° 13' 59" W. 1915.62'  
(SECTION / LINE)

L.C.R.C.  
L.I. P. 335

HWY. U. S. 23

5.00' 14" 01" W.

VICINITY MAP

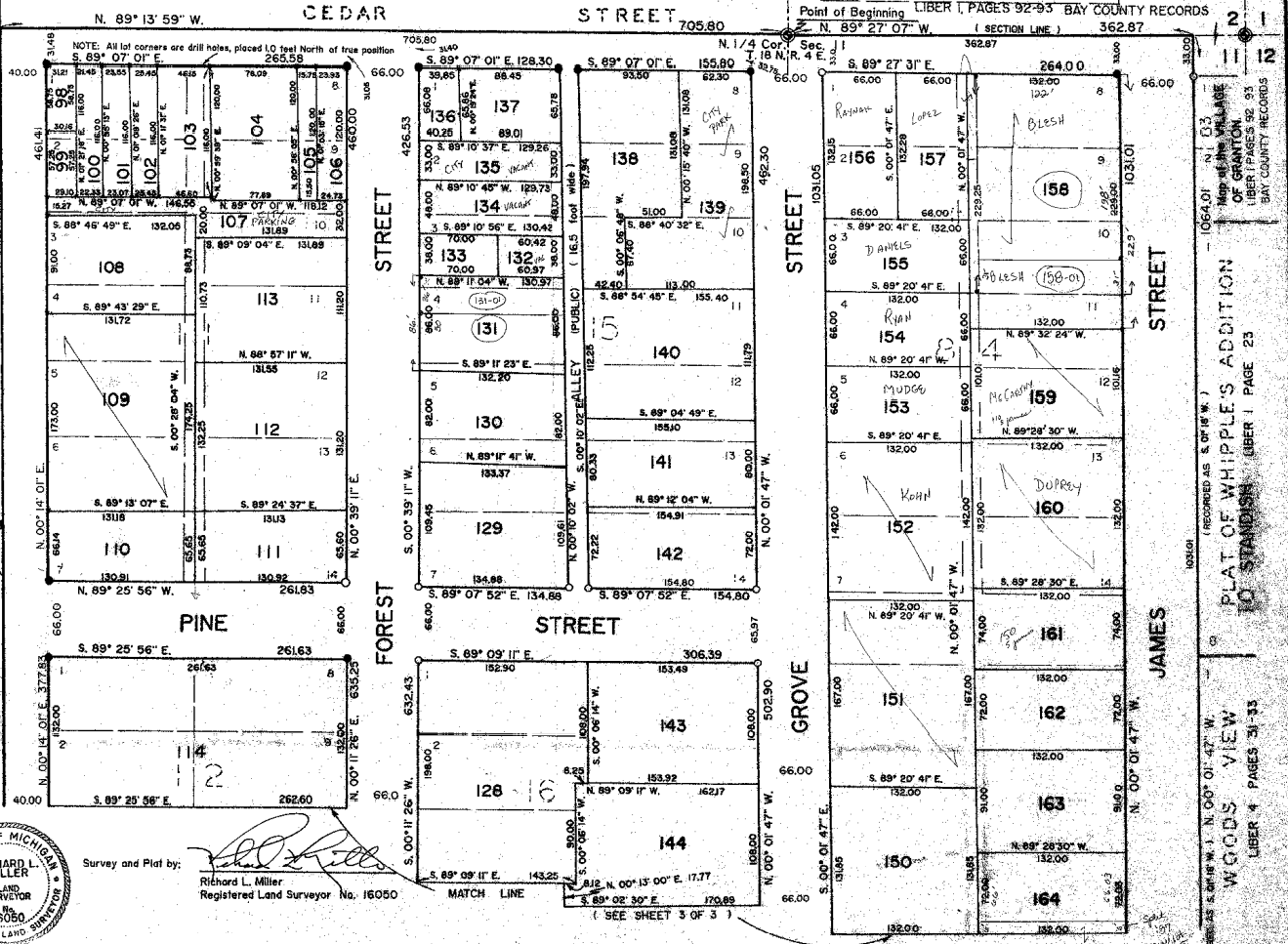


Survey and Plat by:

Richard L. Miller  
Registered Land Surveyor No. 16050

MATCH LINE

(SEE SHEET 3 OF 3)



PLAT OF WHIPPLE'S ADDITION  
TO STANDISH (LIBER 1 PAGE 23)

WOODS VIEW  
LIBER 4 PAGES 31-33

(RECORDED AS S. 07' 16" W.)

LIBER 4 PAGES 31-33

LIBER 4 PAGES 31-33

LIBER 4 PAGES 31-33

LIBER 4 PAGES 31-33

LIBER 4 PAGES 31-33

LIBER 4 PAGES 31-33

LIBER 4 PAGES 31-33

LIBER 4 PAGES 31-33

LIBER 4 PAGES 31-33

LIBER 4 PAGES 31-33

LIBER 4 PAGES 31-33

LIBER 4 PAGES 31-33

LIBER 4 PAGES 31-33

LIBER 4 PAGES 31-33

LIBER 4 PAGES 31-33

LIBER 4 PAGES 31-33

LIBER 4 PAGES 31-33

LIBER 4 PAGES 31-33

LIBER 4 PAGES 31-33

LIBER 4 PAGES 31-33

LIBER 4 PAGES 31-33

LIBER 4 PAGES 31-33

LIBER 4 PAGES 31-33

LIBER 4 PAGES 31-33

LIBER 4 PAGES 31-33

LIBER 4 PAGES 31-33