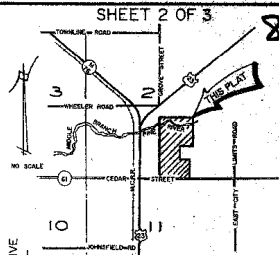
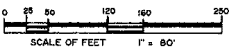


ASSESSOR'S PLAT OF CITY OF STANDISH NO. 3

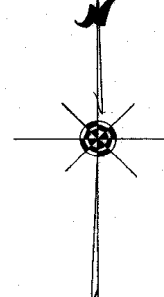
A SUBDIVISION OF PART OF THE W. 1/2 OF THE S.E. 1/4 OF SECTION 2, T. 18 N. R. 4 E.
LINCOLN TOWNSHIP, ARENAC COUNTY
MICHIGAN

PLAT LEGEND

1. ALL DIMENSIONS ARE IN FEET.
2. CONCRETE MONUMENTS CONSISTING OF A SOLID STEEL ROD, 1/2 INCH IN DIAMETER AND 36 INCHES IN LENGTH AND COMPLETELY ENCASED IN CONCRETE 4 INCHES IN DIAMETER, HAVE BEEN PLACED AT ALL POINTS MARKED THIS "C".
3. CORNER MONUMENTS CONSISTING OF 1/2 INCH STEEL RODS, AT LEAST 4 INCHES IN LENGTH, DRILLED, GROUTED AND CAPPED IN CONCRETE WELLS ARE MARKED THIS "O".
4. LOT CORNERS HAVE BEEN MARKED WITH 3/8 INCH IN DIAMETER STEEL RODS, AT LEAST 18 INCHES IN LENGTH. LOT CORNERS MARKED WITH DRILL HOLES OR "P.K." NAILS IN CONCRETE ARE MARKED THIS "X".
5. BEARINGS WERE ESTABLISHED FROM PLANS ON FILE OF THE MICHIGAN DEPARTMENT OF TRANSPORTATION FOR HIGHWAY U.S. 23 (FILE NO. 6-A-2 SHEET 19).



VICINITY MAP



Assessor's Plat of CITY OF STANDISH NO. 1

CABINET 2 SLIDES
RIVER STREET
(NORTH - SOUTH 1/4 LINE)

GROVE STREET
RIVER STREET
(NORTH - SOUTH 1/4 LINE)

DIX DRIVE

ORCHARD AVENUE

Center Sec. 2
T. 18 N. R. 8 E.

L.C.R.C.
L. I. P. 333

S. 00° 32' 12" E.
56.00

S. 00° 00' 39" W.
2060.57

S. 89° 51' 28" W.
131.35

S. 89° 51' 28" W.
100.00

S. 89° 51' 28" E.
264.00

S. 89° 51' 28" E.
264.00

S. 89° 49' 18" E.
66.00

S. 89° 51' 28" E.
84.79

S. 89° 51' 28" E.
132.00

S. 89° 51' 28" E.
130.00

S. 89° 51' 28" E.
132.00

S. 89° 51' 28" E.
132.00

S. 89° 51' 28" E.
132.00

S. 89° 51' 28" E.
132.00

S. 89° 51' 28" E.
132.00

S. 89° 51' 28" E.
132.00

S. 89° 51' 28" E.
132.00

S. 89° 51' 28" E.
132.00

S. 89° 51' 28" E.
132.00

S. 89° 51' 28" E.
132.00

S. 89° 51' 28" E.
132.00

S. 89° 51' 28" E.
132.00

S. 89° 51' 28" E.
132.00

S. 89° 51' 28" E.
132.00

S. 89° 51' 28" E.
132.00

S. 89° 51' 28" E.
132.00

S. 89° 51' 28" E.
132.00

S. 89° 51' 28" E.
132.00

S. 89° 51' 28" E.
132.00

S. 89° 51' 28" E.
132.00

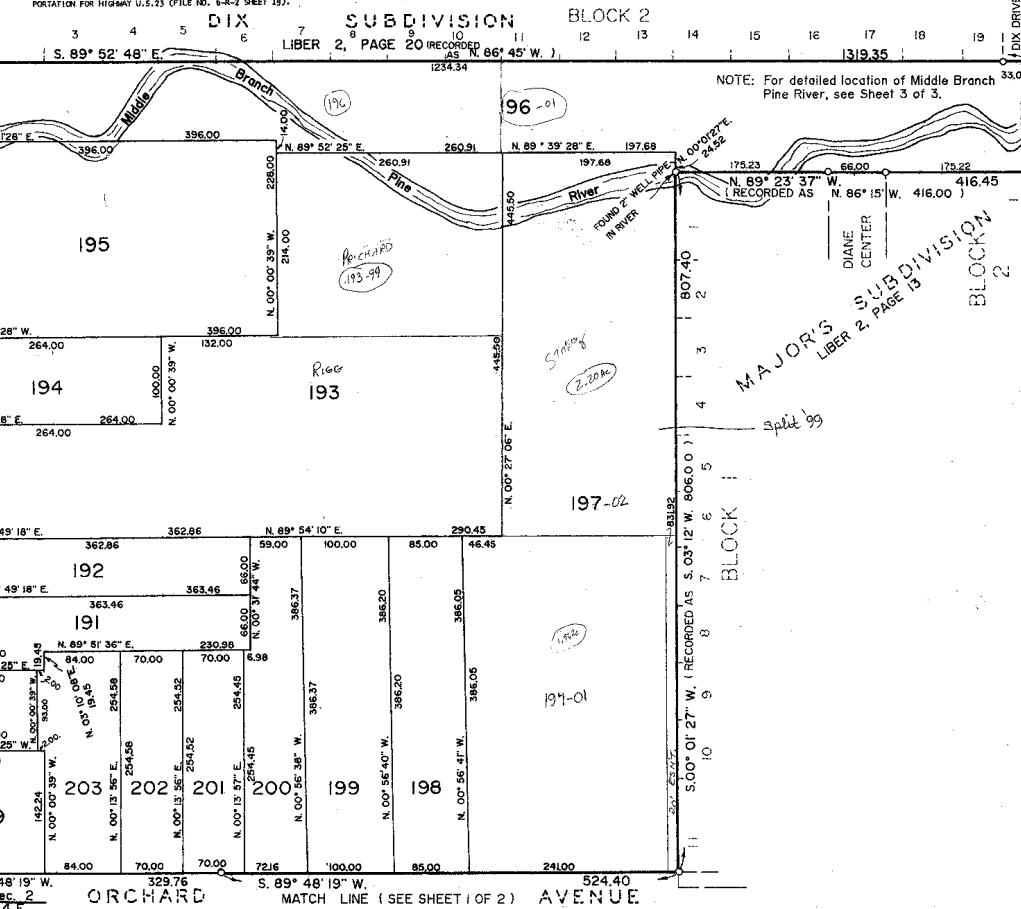
S. 89° 51' 28" E.
132.00

S. 89° 51' 28" E.
132.00

S. 89° 51' 28" E.
132.00

S. 89° 51' 28" E.
132.00

S. 89° 51' 28" E.
132.00



NOTE: For detailed location of Middle Branch Pine River, see Sheet 3 of 3.

MAJOR'S SUBDIVISION
LIBER 2, PAGE 13
BLOCK 2

BLOCK 1

