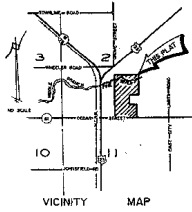
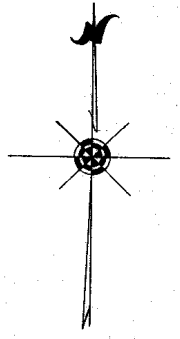
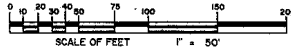
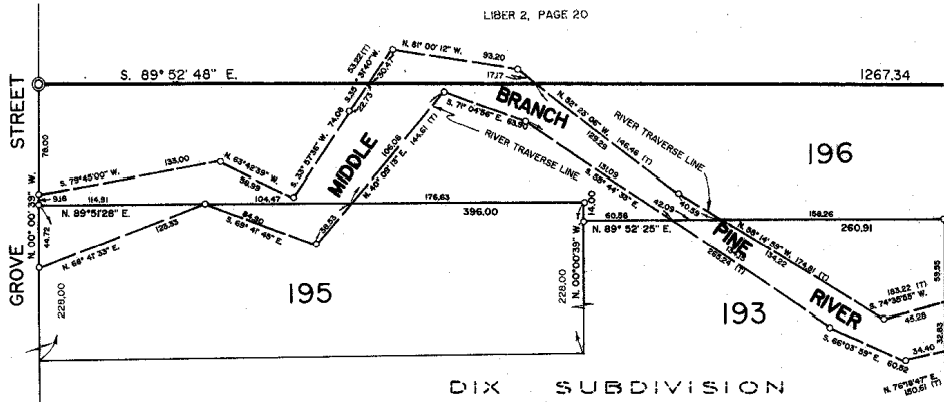


ASSESSOR'S PLAT OF CITY OF STANDISH NO. 3

A SUBDIVISION OF PART OF THE W. 1/2 OF THE S.E. 1/4 OF SECTION 2, T. 18 N. R. 4 E.
LINCOLN TOWNSHIP, ARENAC COUNTY
MICHIGAN

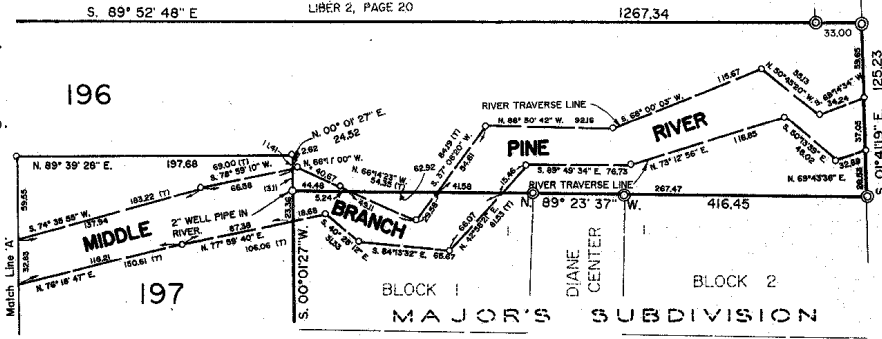


DIX SUBDIVISION
LIBER 2, PAGE 20



DIX SUBDIVISION

- PLAT LEGEND
1. ALL DIMENSIONS ARE IN FEET
 2. CONCRETE MONUMENTS CONSISTING OF A SOLID STEEL ROD, 1/2 INCH IN DIAMETER AND 36 INCHES IN LENGTH AND COMPLETELY ENCASED IN CONCRETE 4 INCHES IN DIAMETER, HAVE BEEN PLACED AT ALL POINTS MARKED THUS: \odot
 3. LOT CORNERS AND THE RIVER TRAVERSE LINE HAVE BEEN MARKED WITH 1/2 INCH IN DIAMETER STEEL RODS, AT LEAST 18 INCHES IN LENGTH AND ARE MARKED THUS: \circ
 4. BEARINGS WERE ESTABLISHED FROM PLANS ON FILE OF THE MICHIGAN DEPARTMENT OF TRANSPORTATION FOR HIGHWAY U.S. 23 (FILE NO. 6-R-2 SHEET 19).



MAJOR'S SUBDIVISION
BLOCK 1
DIANE CENTER
BLOCK 2

LIBER 2, PAGE 13



Survey and Plat by: *Richard L. Miller*
Richard L. Miller
Registered Land Surveyor No. 16050