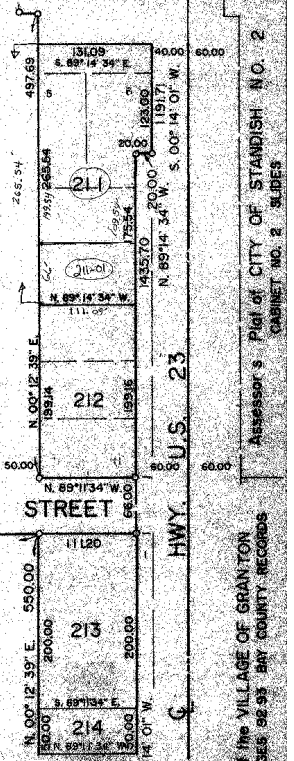
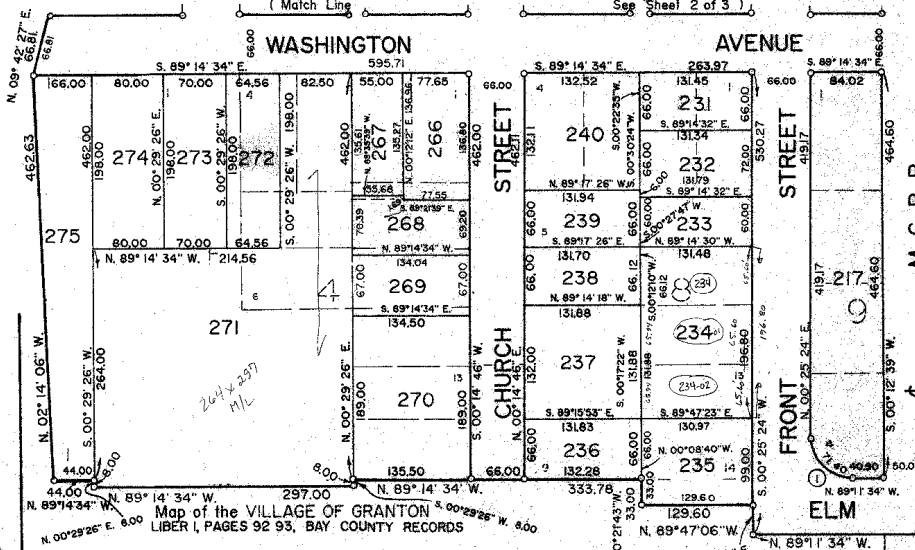
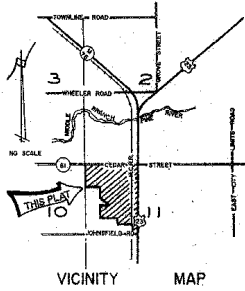
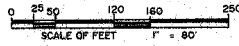


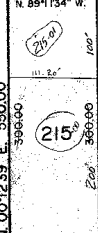
ASSESSOR'S PLAT OF
CITY OF STANDISH NO. 4

SHEET 3 OF 3

A SUBDIVISION OF PART OF THE N.W. 1/4 OF SECTION 11, T. 18 N. R. 4 E.
LINCOLN TOWNSHIP, ARENAC COUNTY
MICHIGAN



MATCH LINE "A"



Map of the VILLAGE OF GRANTON
LIBER I, PAGES 92-93, BAY COUNTY RECORDS

Map of the VILLAGE OF GRANTON
LIBER I, PAGES 92-93, BAY COUNTY RECORDS

CURVE DATA

Curve	Δ	Radius	Long Chd	Chord Brg.	Arc Length
1	90°23'02"	45.26	64.21	N. 44°16'20" W.	71.40

PLAT LEGEND

- ALL DIMENSIONS ARE IN FEET.
- CONCRETE MONUMENTS CONSISTING OF A SOLID STEEL ROD, 1/2 INCH IN DIAMETER AND 36 INCHES IN LENGTH AND COMPLETELY ENCASED IN CONCRETE 4 INCHES IN DIAMETER, HAVE BEEN PLACED AT ALL POINTS MARKED THIS 'O'.
- CORNER MONUMENTS CONSISTING OF 3/8 INCH STEEL RODS, AT LEAST 4 INCHES IN LENGTH, DRILLED, GROUTED AND CAPPED IN CEMENT WALKS ARE MARKED THIS 'O'.
- LOT CORNERS HAVE BEEN MARKED WITH 1/2 INCH IN DIAMETER STEEL RODS, AT LEAST 36 INCHES IN LENGTH. LOT CORNERS MARKED WITH DRILL HOLES OR 'P.K.' NAILS IN CONCRETE ARE MARKED THIS 'X'.
- BEARINGS WERE ESTABLISHED FROM PLANS ON FILE OF THE MICHIGAN DEPARTMENT OF TRANSPORTATION FOR HIGHWAY U.S. 23 (FILE NO. S-R-2 SHEET 153).
- ALL CURVILINEAR DIMENSIONS ARE ARC LENGTHS.

Survey and Plat by: **Richard L. Miller**
Registered Land Surveyor No. 16050

Map of the VILLAGE OF GRANTON
LIBER I, PAGES 92-93, BAY COUNTY RECORDS

Assessor's Plat of CITY OF STANDISH NO. 2
CABINET NO. 2 SLIDES

L.C.R.C. L. P.
N.W. 1/4 Cor. Sec. 11
T. 18 N. R. 4 E.

L.C.R.C. L. P.
E. 1/4 Cor. Sec. 11
T. 18 N. R. 4 E.

U.S. 23
HWY.

M.C.R.R.

EAST-WEST 1/4 LINE
5295.52 (TOTAL)