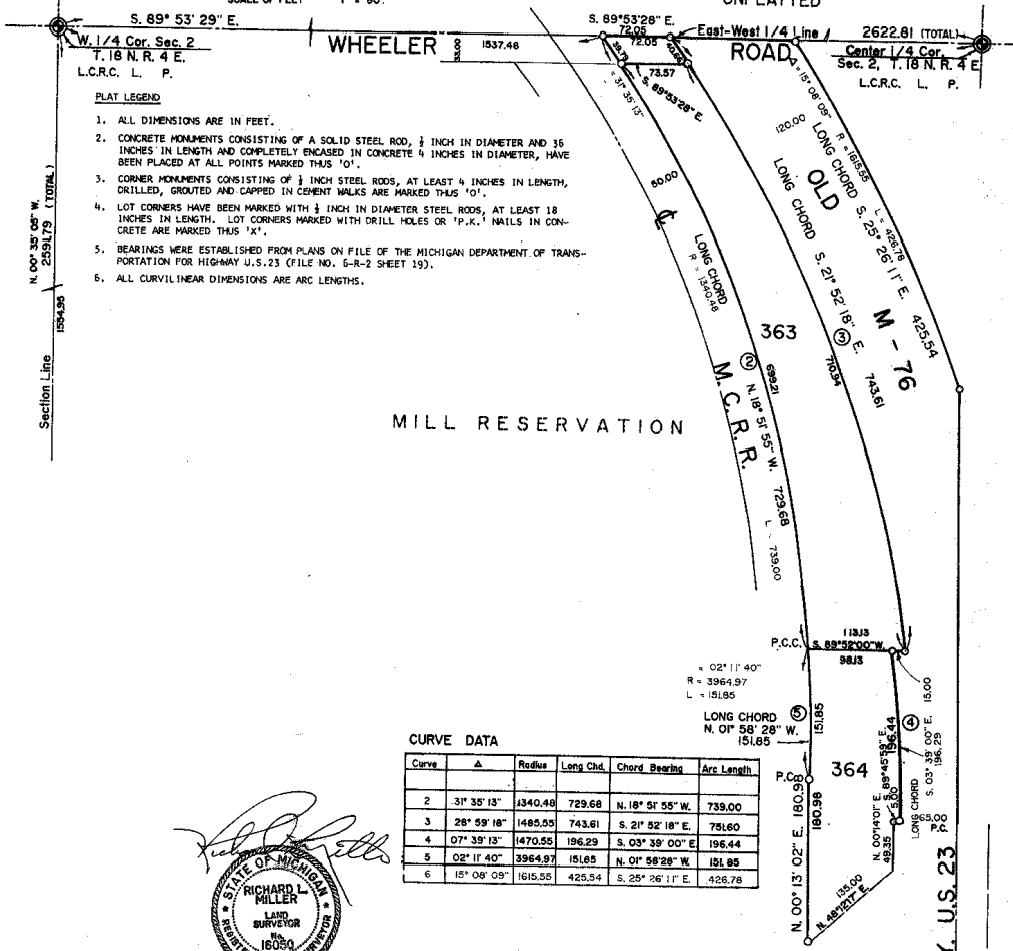
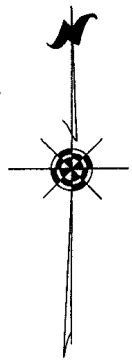
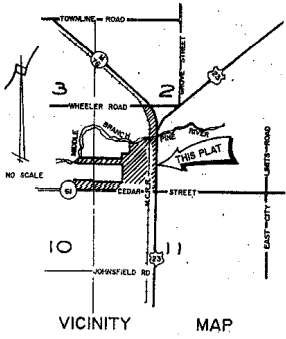
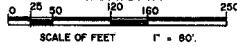


ASSESSOR'S PLAT OF
CITY OF STANDISH NO. 5

A SUBDIVISION OF PART OF THE S.W. 1/4 OF SECTION 2 AND PART OF THE S.E. 1/4 OF SECTION 3, T. 18 N. R. 4 E.,
 LINCOLN TOWNSHIP, ARENAC COUNTY
 MICHIGAN



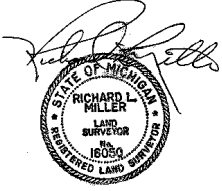
PLAT LEGEND

1. ALL DIMENSIONS ARE IN FEET.
2. CONCRETE MONUMENTS CONSISTING OF A SOLID STEEL ROD, 1/2 INCH IN DIAMETER AND 36 INCHES IN LENGTH AND COMPLETELY ENCASED IN CONCRETE 4 INCHES IN DIAMETER, HAVE BEEN PLACED AT ALL POINTS MARKED THUS 'O'.
3. CORNER MONUMENTS CONSISTING OF 1/2 INCH STEEL RODS, AT LEAST 4 INCHES IN LENGTH, DRILLED, GROUTED AND CAPPED IN CEMENT WALKS ARE MARKED THUS 'O'.
4. LOT CORNERS HAVE BEEN MARKED WITH 1/2 INCH IN DIAMETER STEEL RODS, AT LEAST 18 INCHES IN LENGTH. LOT CORNERS MARKED WITH DRILL HOLES OR 'P.K.' NAILS IN CONCRETE ARE MARKED THUS 'X'.
5. BEARINGS WERE ESTABLISHED FROM PLANS ON FILE OF THE MICHIGAN DEPARTMENT OF TRANSPORTATION FOR HIGHWAY U.S. 23 (FILE NO. 5-R-2 SHEET 19).
6. ALL CURVILINEAR DIMENSIONS ARE ARC LENGTHS.

MILL RESERVATION

CURVE DATA

Curve	Δ	Radius	Long Chd.	Chord Bearing	Arc Length
2	31° 35' 13"	4340.48	729.68	N. 18° 51' 55" W.	739.00
3	28° 59' 18"	1485.35	743.61	S. 21° 52' 18" E.	791.60
4	07° 39' 13"	1470.55	196.29	S. 03° 39' 00" E.	196.44
5	02° 11' 40"	3964.97	151.65	N. 01° 58' 28" W.	151.85
6	15° 08' 09"	1615.55	425.54	S. 25° 26' 11" E.	426.78



Match Line "C"
 See Sheet 4 of 4

HWY. U.S. 23