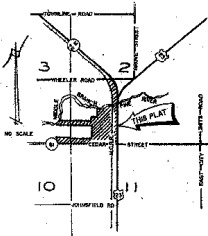
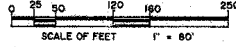


15

ASSESSOR'S PLAT OF CITY OF STANDISH NO. 5

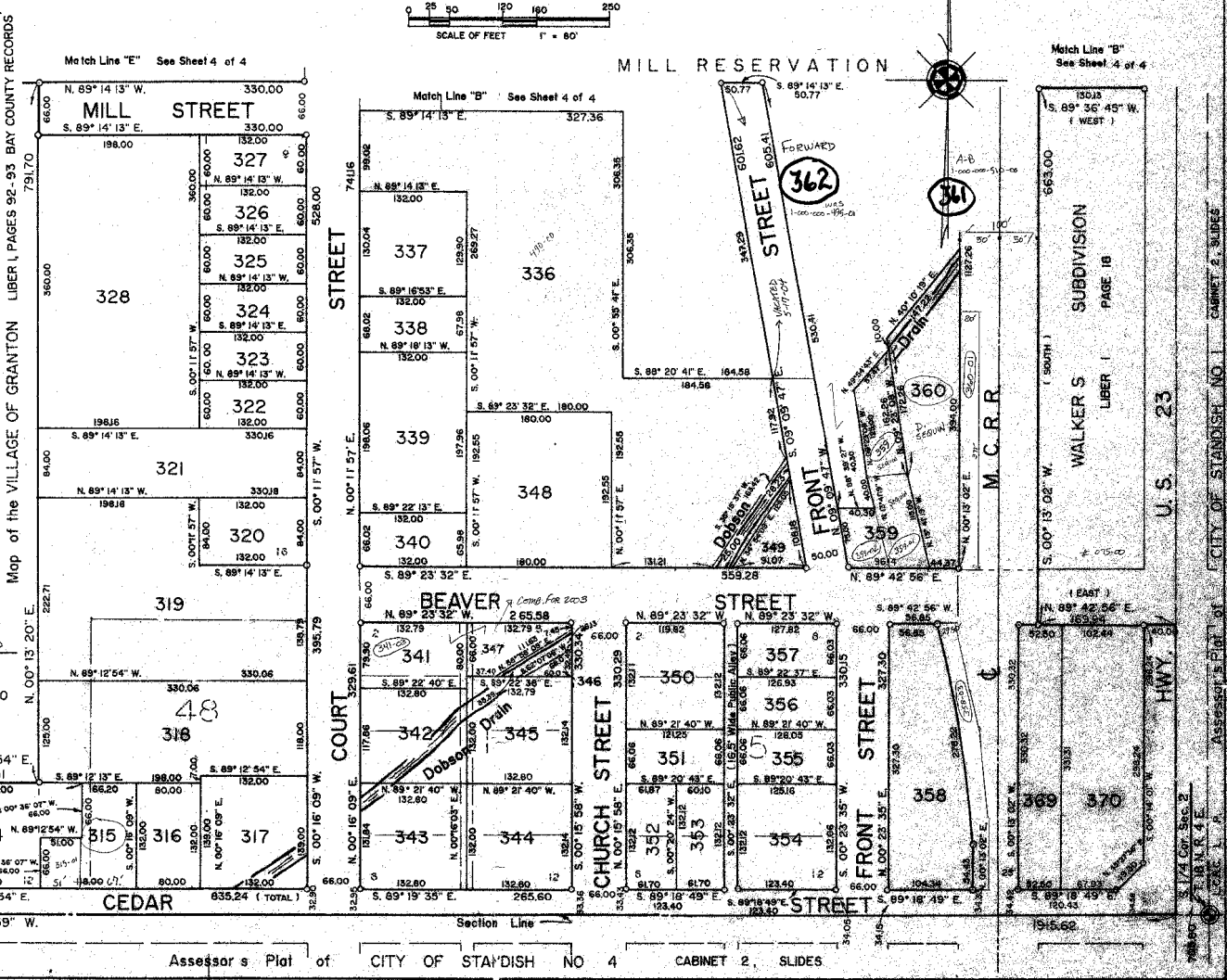
A SUBDIVISION OF PART OF THE S.W. 1/4 OF SECTION 2 AND PART OF THE S.E. 1/4 OF SECTION 3, T. 18 N. R. 4 E., LINCOLN TOWNSHIP, ARENAC COUNTY, MICHIGAN



PLAT LEGEND
1. ALL DIMENSIONS ARE IN FEET.
2. CONCRETE MONUMENTS CONSISTING OF A SOLID STEEL ROD, 3/4 INCH IN DIAMETER AND 36 INCHES IN LENGTH AND COMPLETELY ENCASED IN CONCRETE 4 INCHES IN DIAMETER, HAVE BEEN PLACED AT ALL POINTS MARKED THIS 'O'.

Survey and Plat by: Richard L. Miller, Registered Land Surveyor No. 16050

Point of Beginning, T. 18 N. R. 4 E., L.C.R.C. L. P.



CITY OF STANDISH NO. 1 CABINET 2, SLIDES

U.S. 23