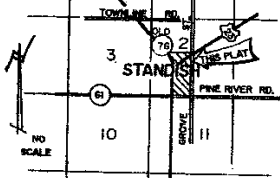


ASSESSOR'S PLAT OF CITY OF STANDISH NO. 1

A SUBDIVISION OF PART OF THE SE 1/4 OF THE SW 1/4 OF SECTION 2, T. 18 N. R. 4 E.
LINCOLN TOWNSHIP, ARENAC COUNTY
MICHIGAN

N. 1/4 COR. SEC. 2
T. 18 N. R. 4 E.
L.C.R.C.
L. I. P. 333



SCALE OF FEET 1" = 60'



UNPLATTED

CENTER 1/4 COR. OF
SEC. 2, T. 18 N. R. 4 E.
L.C.R.C. L. I. P. 333
854.65

EAST - WEST 1/4 SEC. LINE

WHEELER ROAD

WEST 1/4 COR. OF
SEC. 2, T. 18 N. R. 4 E.
L.C.R.C.
L. I. P. 173

S. 89° 53' 29" E.

S. 89° 53' 29" E.

1768.16

80.00

163.37

172.00

172.00

172.00

172.00

172.00

172.00

172.00

172.00

172.00

172.00

172.00

172.00

172.00

172.00

172.00

172.00

172.00

172.00

172.00

172.00

172.00

172.00

172.00

172.00

172.00

172.00

172.00

172.00

172.00

172.00

172.00

172.00

172.00

172.00

172.00

172.00

172.00

172.00

172.00

172.00

172.00

172.00

172.00

172.00

172.00

172.00

172.00

172.00

172.00

172.00

172.00

172.00

172.00

172.00

172.00

172.00

172.00

172.00

172.00

172.00

172.00

172.00

172.00

172.00

172.00

172.00

172.00

172.00

172.00

172.00

172.00

172.00

172.00

172.00

172.00

172.00

172.00

172.00

172.00

172.00

172.00

172.00

172.00

172.00

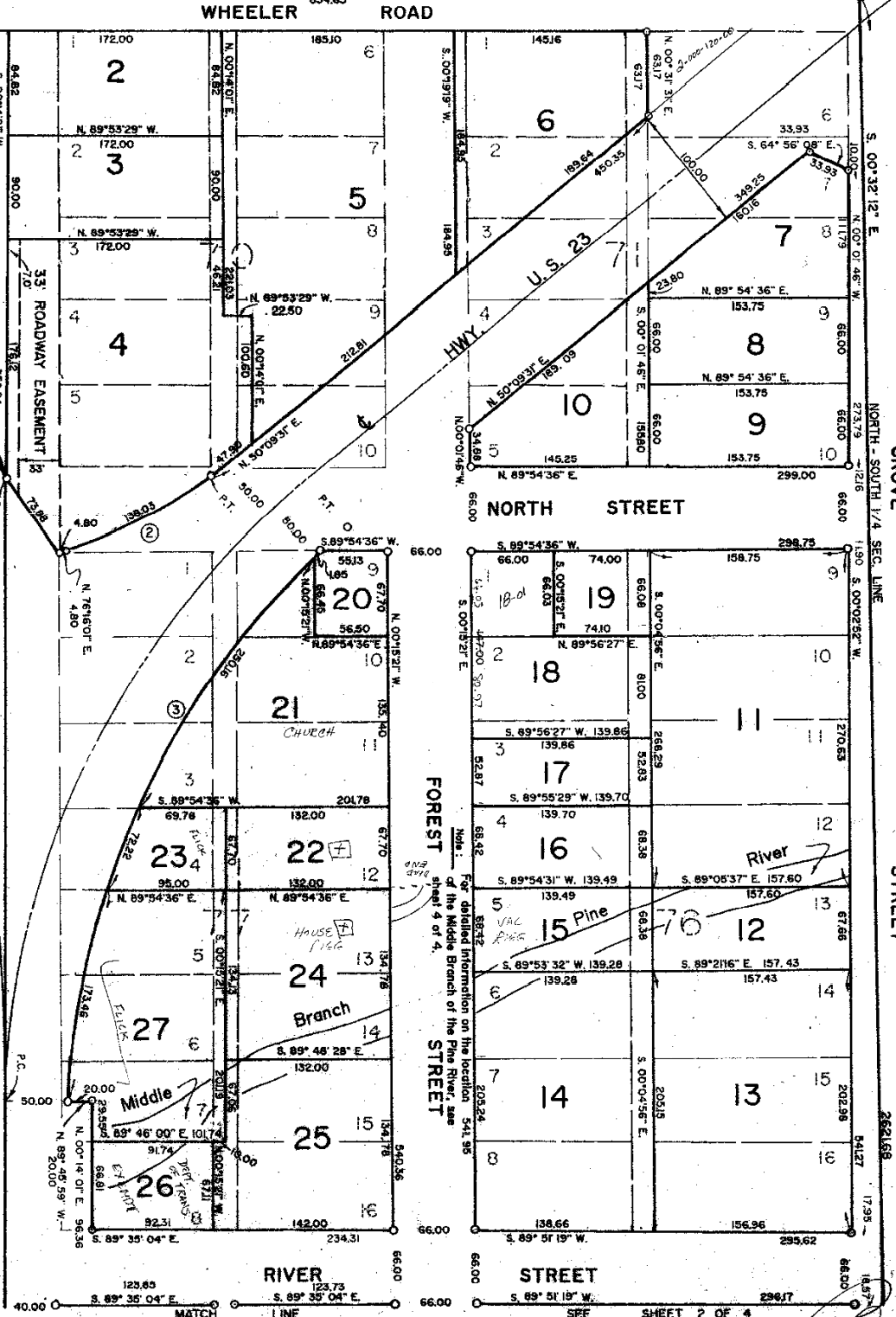
Curve	Radius	Long Chd	Chd. Bearing	Arc Length
1	15° 08' 03"	1615.58	425.54 N. 23° 26' 11" W.	426.76
2	26° 06' 30"	503.08	156.90 N. 63° 12' 48" E.	158.03
3	47° 23' 20"	160.73	483.62 N. 23° 56' 08" E.	497.69

CURVE DATA

PLAT LEGEND

MAP OF THE VILLAGE OF GRANTON
LIBER 1, PAGES 92 & 93, BAY COUNTY RECORDS

HWY. U.S. 23



E 1/4 COR. SEC. 2
T. 18 N. R. 4 E.
L.C.R.C. UNPLATTED
L. I. P. 333
BLOCK 1
DIX 2
LIBER 2
PAGE 20
SUBDIVISION 1
BLOCK 2
UNPLATTED

Survey and Plat by: *Richard L. Miller*
Richard L. Miller
Registered Land Surveyor No. 16050

SHEET 2 OF 4